

# OS LAB -3

Engr. Nauman

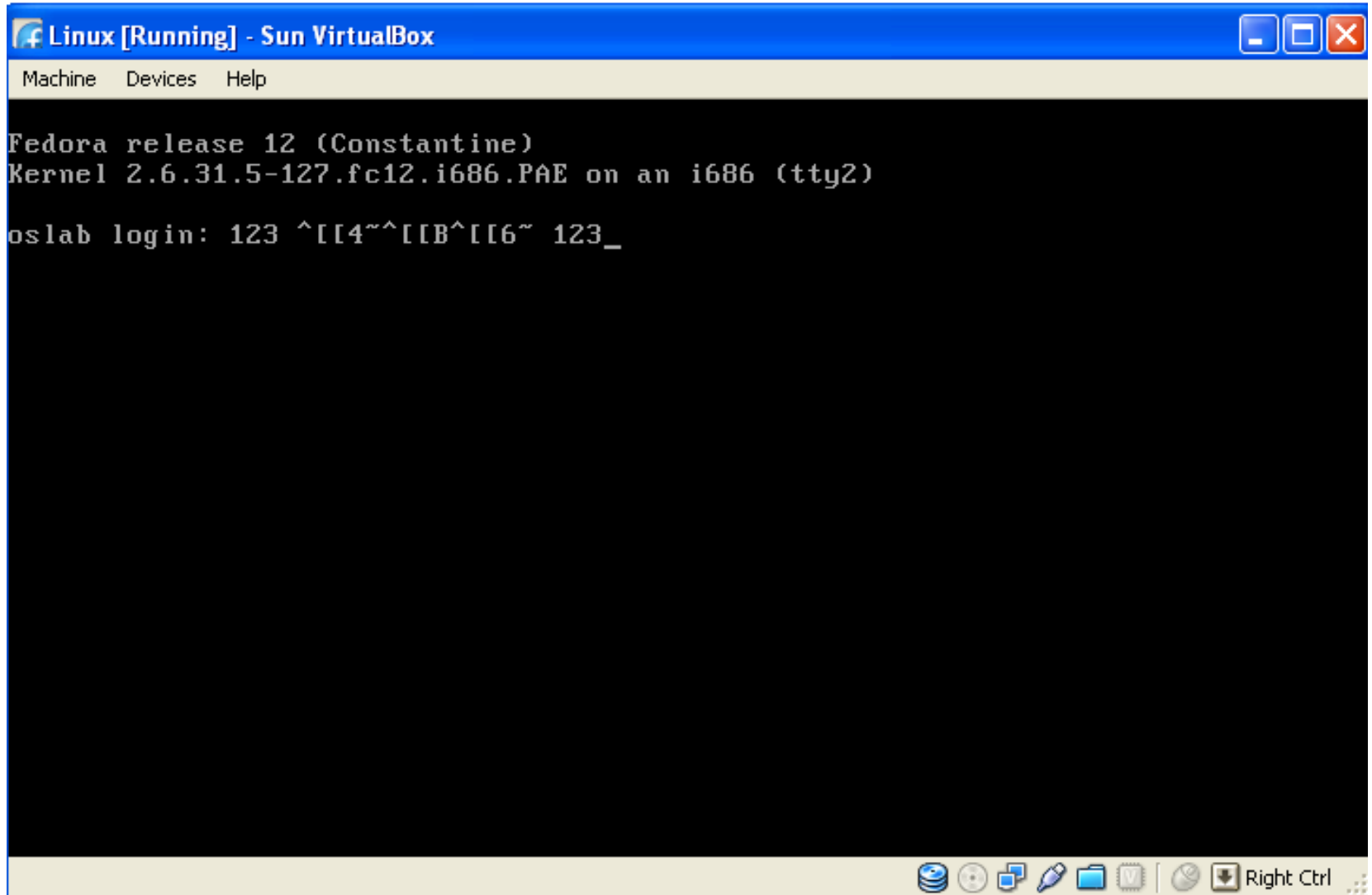
# Issues in last LAB

- Issues in LAB – 2
- Installation of Fedora 12

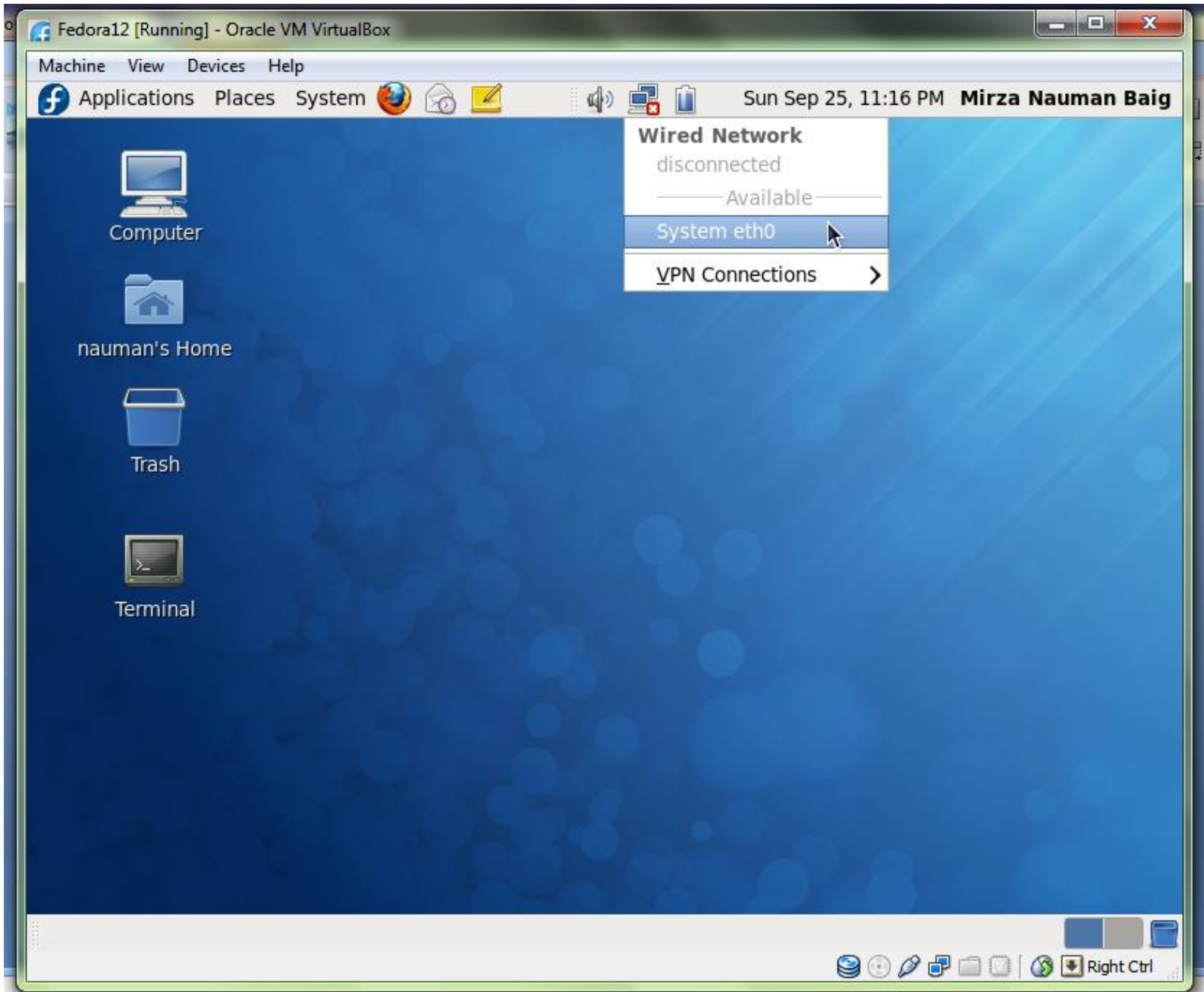
# Lab 2 Tasks

- Create VM settings for Fedora
- Install Fedora 12 (in E: user Data Drive)
- Check different Desktops
- Change Wallpapers
- Terminal and X Windows
  - <Ctrl><Alt><F1-F6>  
Switch to the first text terminals. Under Linux you can have several (6 in standard setup) terminals opened at the same time.
  - <Ctrl><Alt><F7>  
Switch to the first GUI terminal (if X-windows is running on the 7th terminal, where it typically is).
  - <Ctrl><Alt><Fn> (n=7..12)  
Switch to the nth GUI terminal (if a GUI terminal is running on screen n-1).
- (login using root pass)
- Settings of Ethernet and use internet on fedora ,
- Use fedora Calculator
- Restart PC load your \*.vdi and log in using Linux VM already created

# Issues in last LAB



```
Linux [Running] - Sun VirtualBox
Machine  Devices  Help
Fedora release 12 (Constantine)
Kernel 2.6.31.5-127.fc12.i686.PAE on an i686 (tty2)
oslab login: 123 ^[[4~^[[B^[[6~ 123_
```



# DOS Vs Linux

DOS Command	LINUX Command	Action
DIR	ls -l	List directory contents
TREE	ls -R	List directory recursively
CD	cd	Change directory
MKDIR	mkdir	Make a new directory
RMDIR	rmdir	Remove a directory
CHDIR	pwd	Display directory location
DEL	rm	Remove a file

# DOS Vs Linux

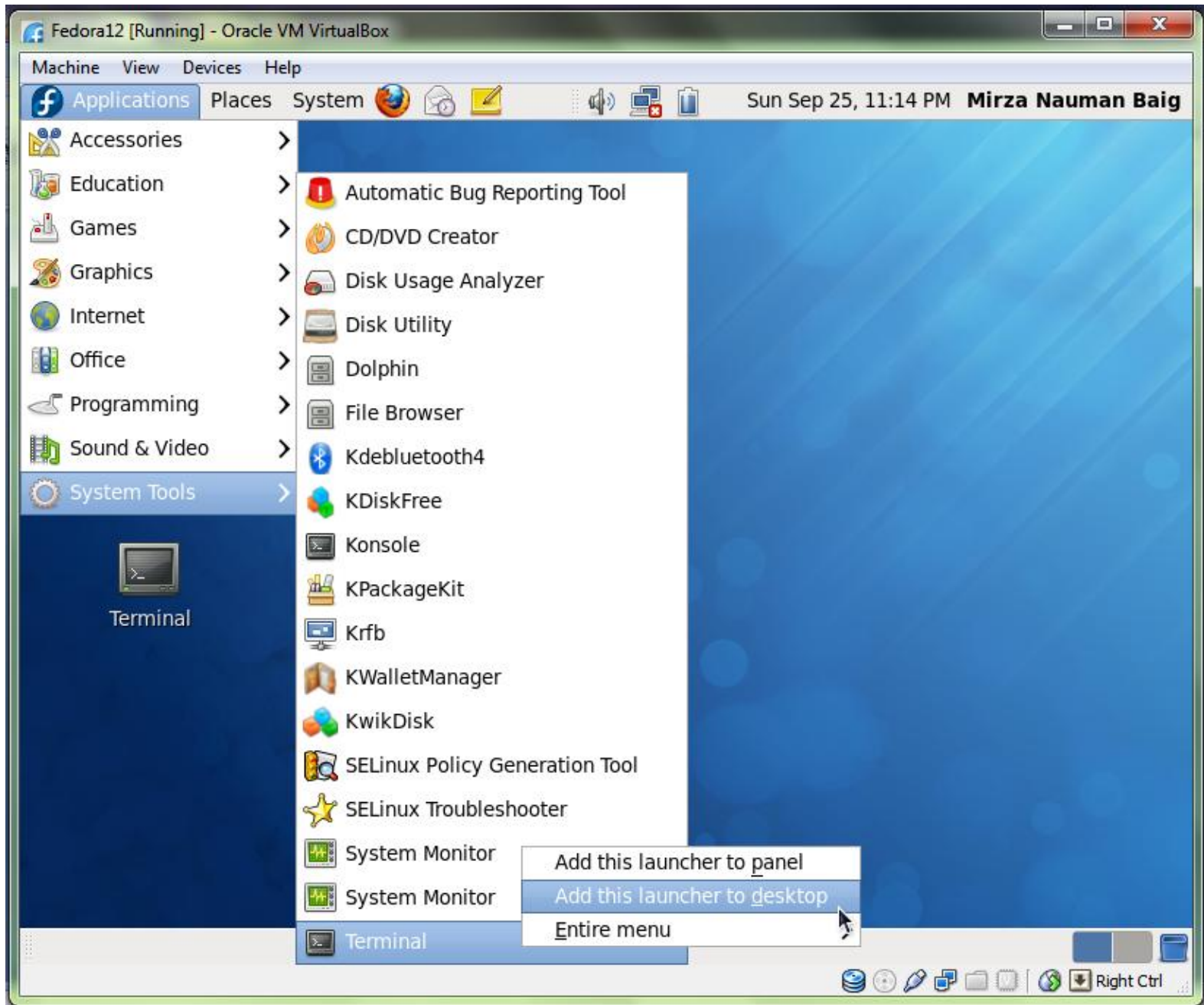
DOS Command	LINUX Command	Action
RMDIR /S (NT) DELTREE (Win 95...)	rm -r	Remove all directories and files below given directory
COPY	cp	Copy a file
XCOPY	cp -r	Copy all file of directory recursively
RENAME or MOVE	mv	Rename/move a file
TYPE	cat	Dump contents of a file to users screen
MORE	more	Pipe output a single page at a time
HELP or <i>COMMAND /?</i>	man	Online manuals

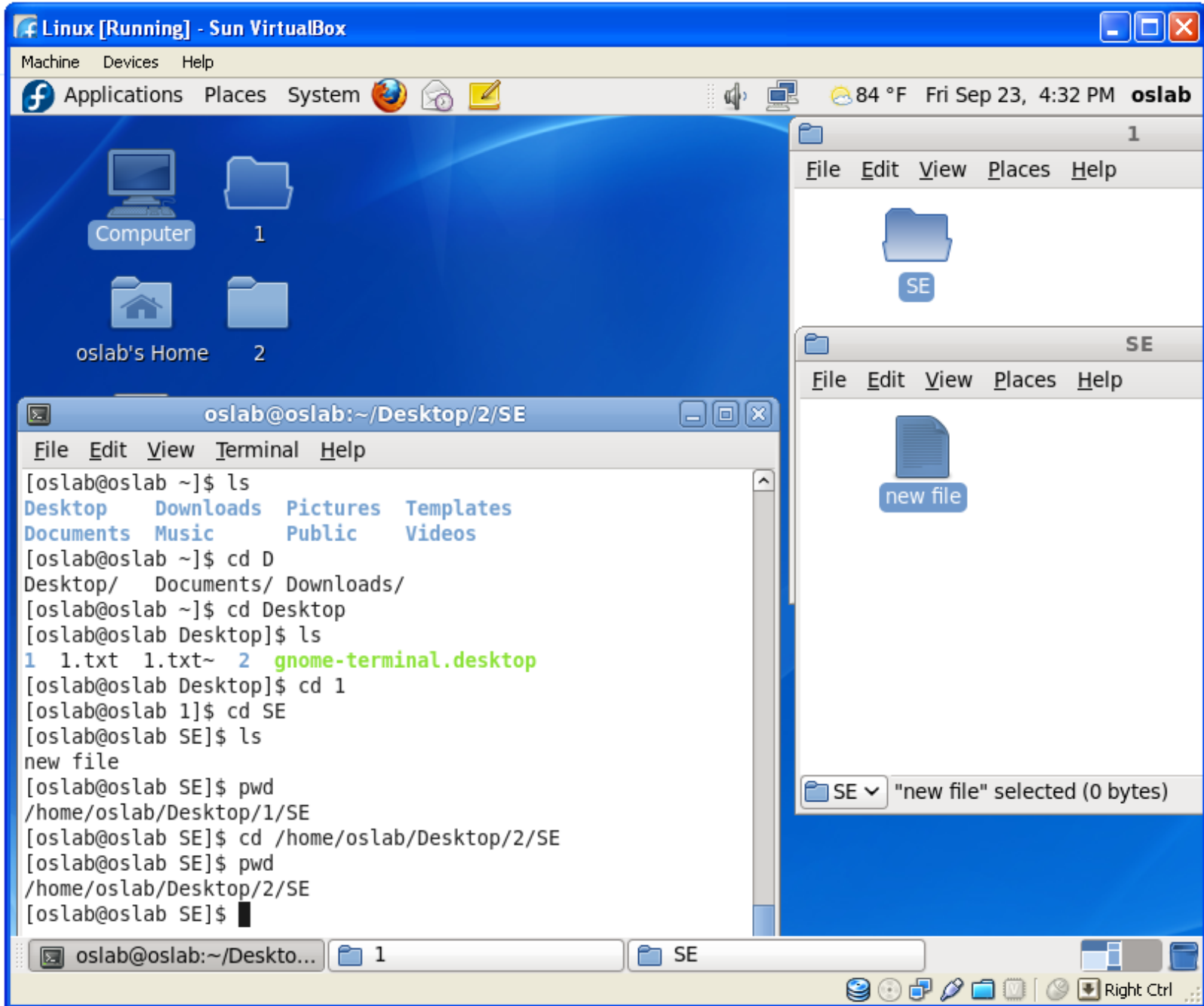
# DOS Vs Linux

DOS Command	LINUX Command	Action
CLS	clear	Clear screen
EXIT	exit	Exit a shell
FIND	find	Look for a word in files given in command line
FC	diff	Compare two files and show differences. Also see mgdiff and tkdiff.
SET	set and env	Show environment variables
ECHO <i>text</i>	echo <i>text</i>	Echo text to screen

# DOS Vs Linux

DOS Command	LINUX Command	Action
SET <i>variable</i>	export variable name	Set environment variables
PATH	echo \$PATH	Display search path for executables
DATE or TIME	date	Show date. (also set date - DOS only)
SORT	sort	Sort data alphabetically/numerically
EDIT <i>filename.txt</i>	vim	Edit a file. The Linux editor which looks most like DOS edit is probably Pico.
\	/	Directory path delimiter
.\	./	Current directory
..\	../	Parent directory





Linux [Running] - Sun VirtualBox

Machine Devices Help

Applications Places System 84 °F Fri Sep 23, 4:49 PM oslab

oslab@oslab:~

File Edit View Terminal Help

```

[oslab@oslab ~]$ ls /
bin  dev  home  lost+found  mnt  proc  sbin  srv  tmp  var
boot  etc  lib  media      opt  root  selinux  sys  usr

[oslab@oslab ~]$ ls
Desktop  Documents  Downloads  Music  Pictures  Public  Templates  Videos

[oslab@oslab ~]$ pwd
/home/oslab

[oslab@oslab ~]$ ls -a
.          Desktop          .gnote          .local          .ssh
..         .dmrc           .gnupg          .mozilla        Templates
.bash_history  Documents       .gstreamer-0.10 Music           .themes
.bash_logout  Downloads       .gtk-bookmarks .nautilus       .thumbnails
.bash_profile .esd_auth      .gvfs           Pictures         Videos
.bashrc       .gconf         .ICEauthority  Public          .xsession-errors
.cache        .gconfd        .icons          .pulse          .xsession-errors.old
.config       .gnome2        .imsettings.log .pulse-cookie
.dbus         .gnome2_private .kde            .recently-used.xbel

[oslab@oslab ~]$ ls -all
total 172
drwx-----. 30 oslab oslab 4096 2011-09-23 16:14 .
drwxr-xr-x.  3 root  root  4096 2010-10-07 20:55 ..
-rw-----.  1 oslab oslab  224 2011-09-23 16:36 .bash_history
-rw-r--r--.  1 oslab oslab   18 2009-09-16 16:15 .bash_logout
-rw-r--r--.  1 oslab oslab  176 2009-09-16 16:15 .bash_profile
-rw-r--r--.  1 oslab oslab  124 2009-09-16 16:15 .bashrc
drwxr-xr-x.  3 oslab oslab 4096 2011-09-23 16:14 .cache
drwxr-xr-x.  4 oslab oslab 4096 2011-09-23 16:09 .config
drwx-----.  3 oslab oslab 4096 2010-10-07 20:56 .dbus
drwxr-xr-x.  4 oslab oslab 4096 2011-09-23 16:25 Desktop

```

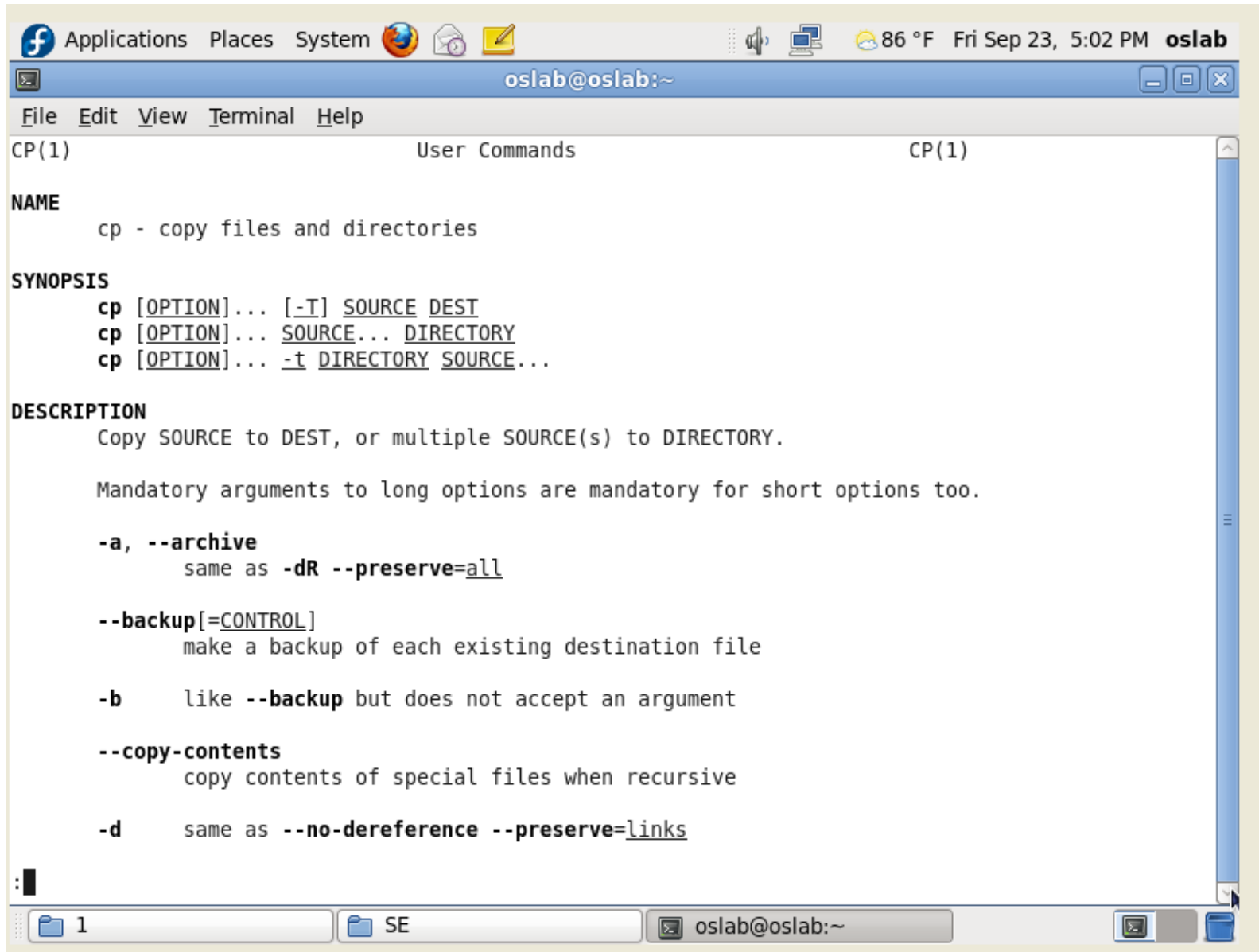
oslab@oslab:~

Right Ctrl

```
[oslab@oslab ~]$ cp --help
Usage: cp [OPTION]... [-T] SOURCE DEST
  or: cp [OPTION]... SOURCE... DIRECTORY
  or: cp [OPTION]... -t DIRECTORY SOURCE...
Copy SOURCE to DEST, or multiple SOURCE(s) to DIRECTORY.

Mandatory arguments to long options are mandatory for short options too.
-a, --archive                same as -dR --preserve=all
  --backup[=CONTROL]        make a backup of each existing destination file
-b                            like --backup but does not accept an argument
  --copy-contents            copy contents of special files when recursive
-d                            same as --no-dereference --preserve=links
-f, --force                  if an existing destination file cannot be
                             opened, remove it and try again (redundant if
                             the -n option is used)
-i, --interactive            prompt before overwrite (overrides a previous -n
                             option)
-H                            follow command-line symbolic links in SOURCE
-l, --link                    link files instead of copying
-L, --dereference            always follow symbolic links in SOURCE
-n, --no-clobber             do not overwrite an existing file (overrides
                             a previous -i option)
-P, --no-dereference         never follow symbolic links in SOURCE
-p                            same as --preserve=mode,ownership,timestamps
  --preserve[=ATTR_LIST]    preserve the specified attributes (default:
                             mode,ownership,timestamps), if possible
                             additional attributes: context, links, xattr,
                             all
-c                            same as --preserve=context
```

# For Help `man [command]`



The image shows a terminal window titled "oslab@oslab:~" with a menu bar containing "File", "Edit", "View", "Terminal", and "Help". The terminal content displays the man page for the "cp" command, including sections for NAME, SYNOPSIS, and DESCRIPTION. The DESCRIPTION section lists several options: -a, --archive; --backup[=CONTROL]; -b; --copy-contents; and -d. The terminal prompt is ":".

```
CP(1) User Commands CP(1)

NAME
  cp - copy files and directories

SYNOPSIS
  cp [OPTION]... [-I] SOURCE DEST
  cp [OPTION]... SOURCE... DIRECTORY
  cp [OPTION]... -t DIRECTORY SOURCE...

DESCRIPTION
  Copy SOURCE to DEST, or multiple SOURCE(s) to DIRECTORY.

  Mandatory arguments to long options are mandatory for short options too.

  -a, --archive
      same as -dR --preserve=all

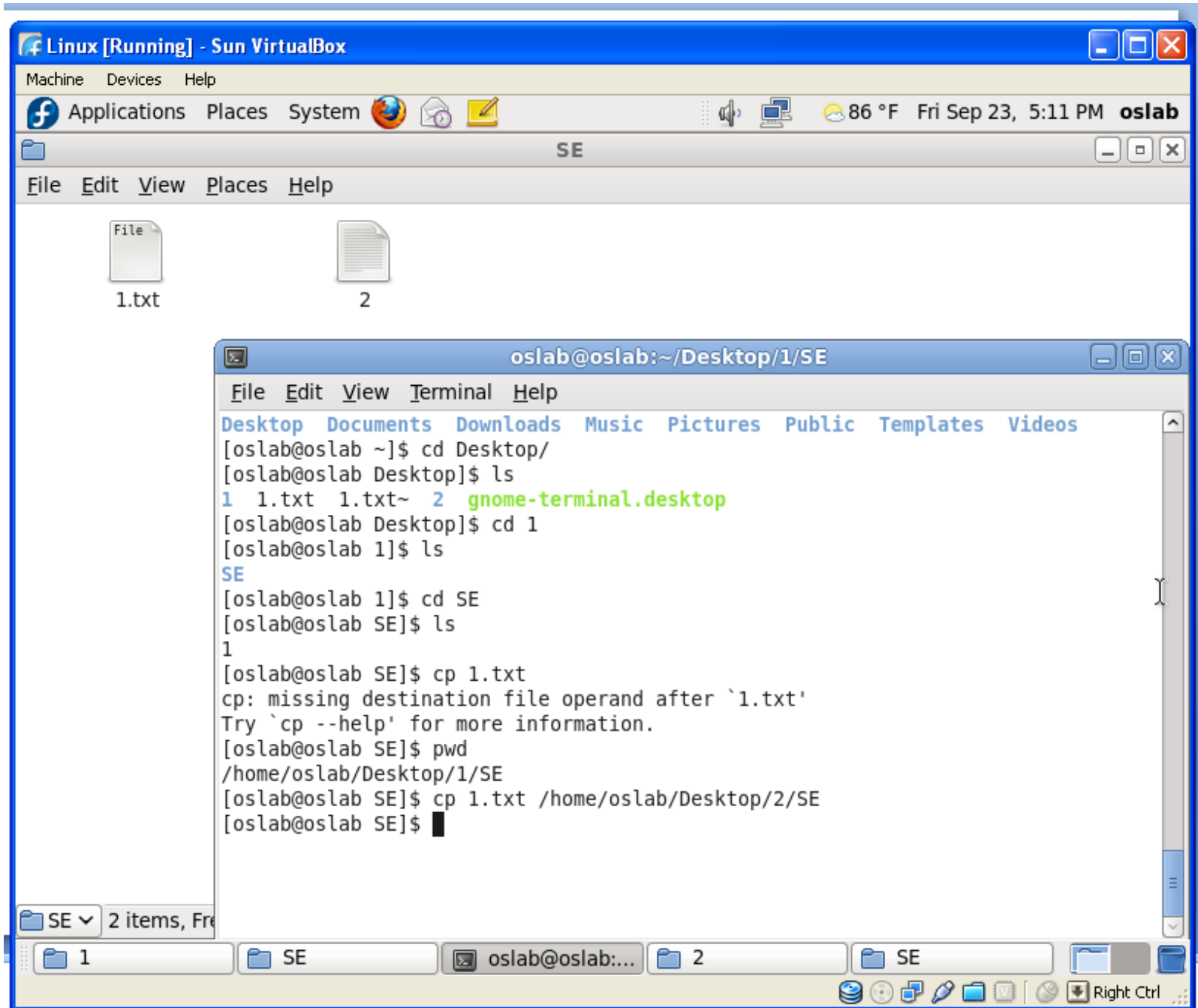
  --backup[=CONTROL]
      make a backup of each existing destination file

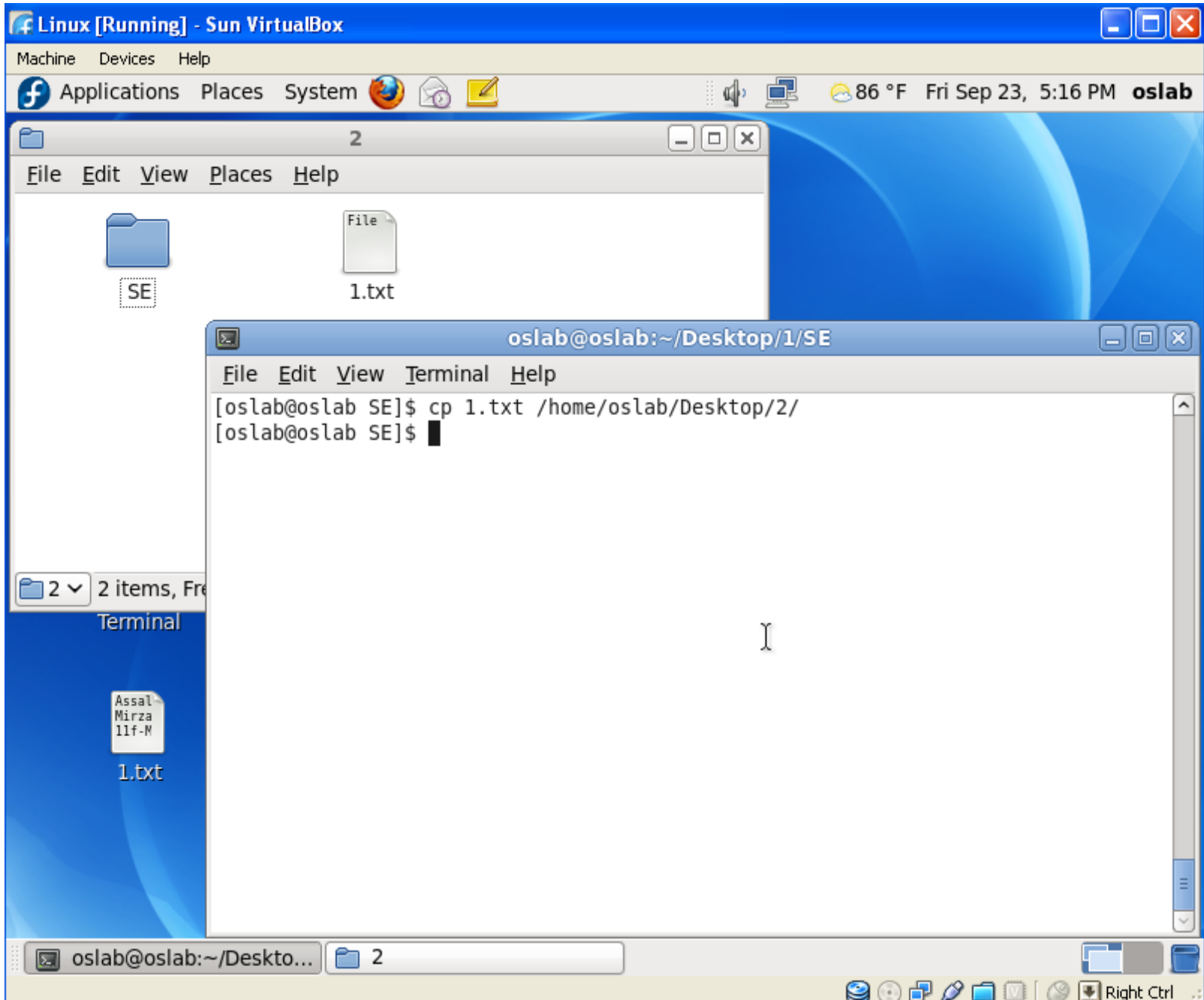
  -b
      like --backup but does not accept an argument

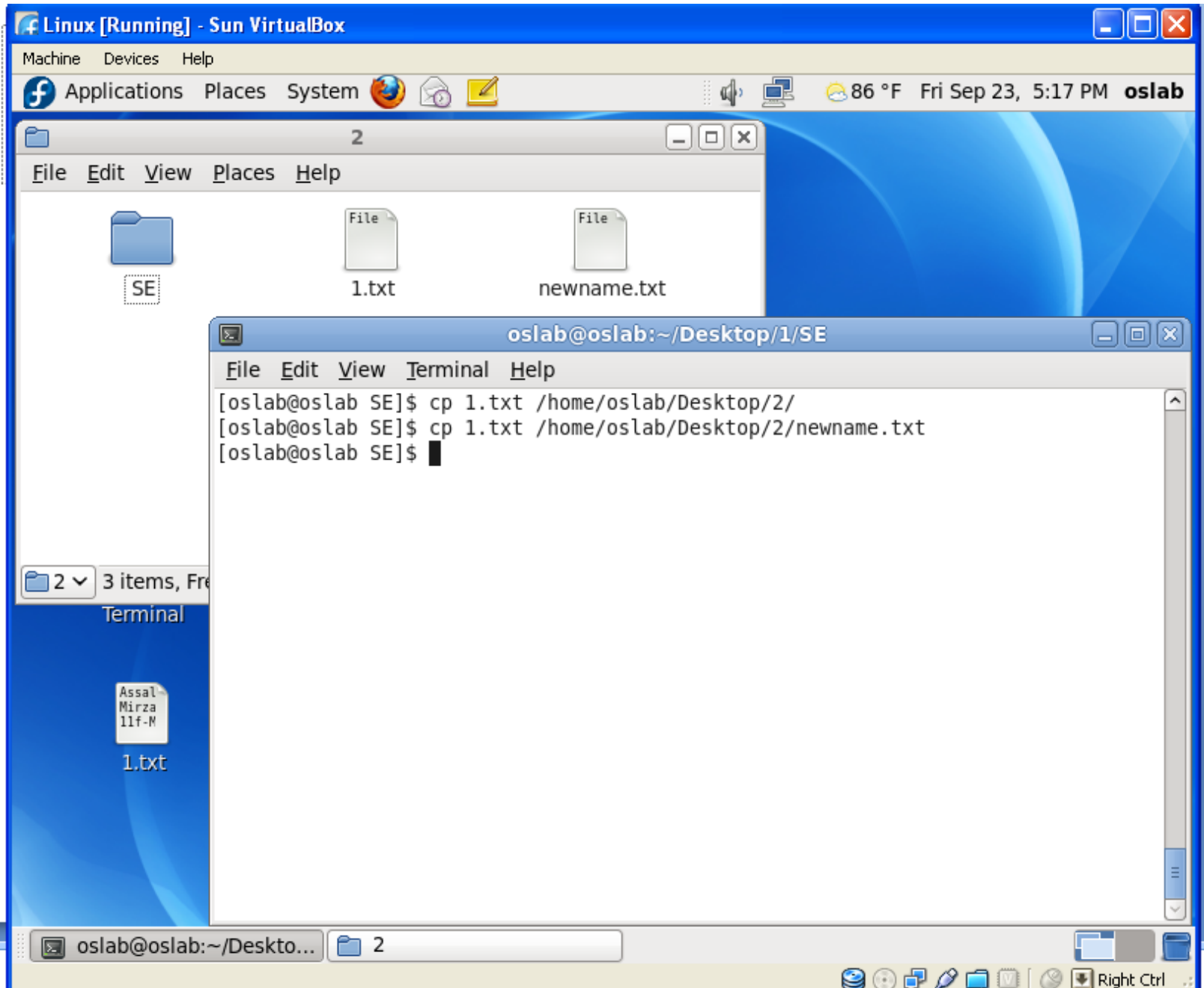
  --copy-contents
      copy contents of special files when recursive

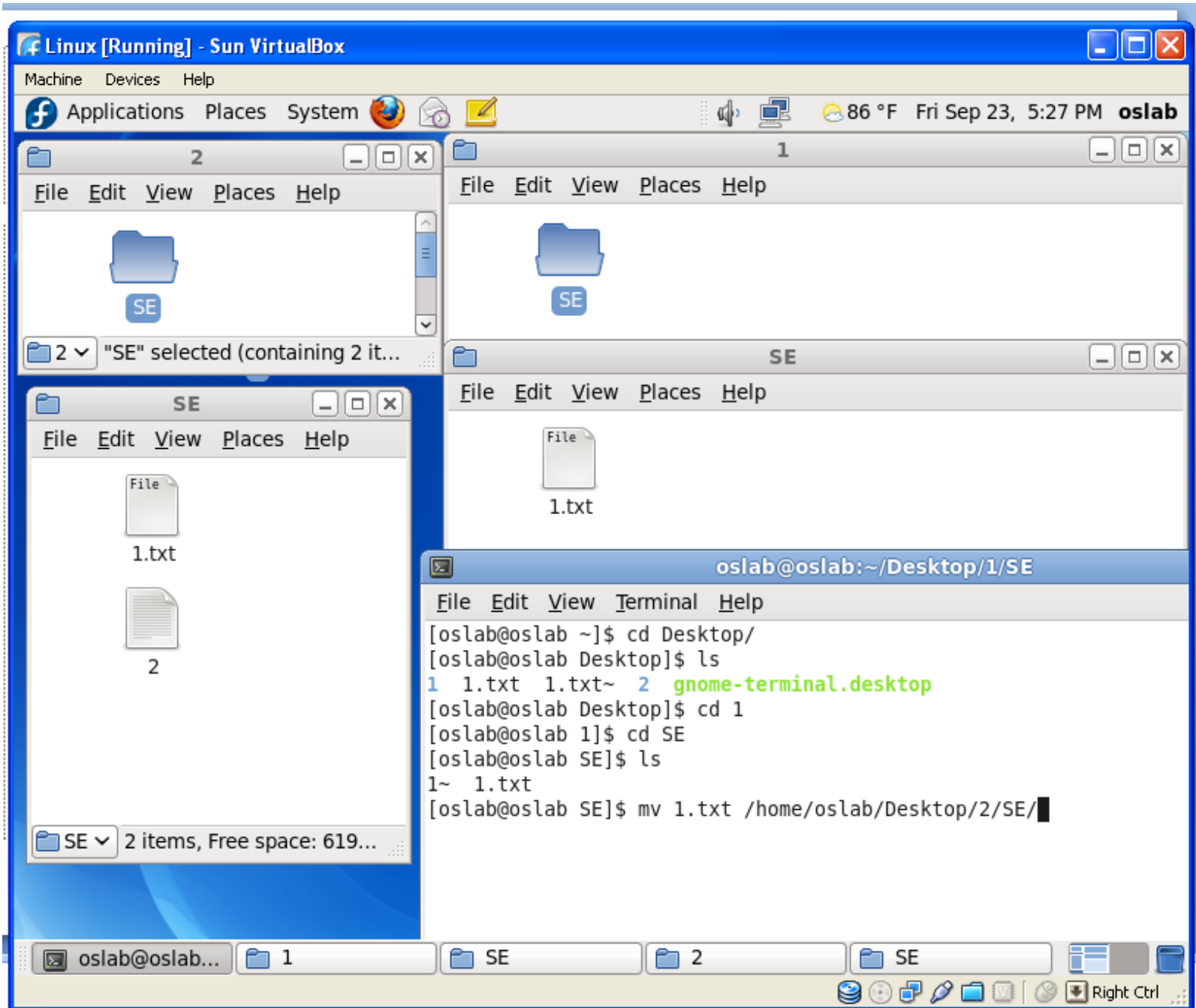
  -d
      same as --no-dereference --preserve=links

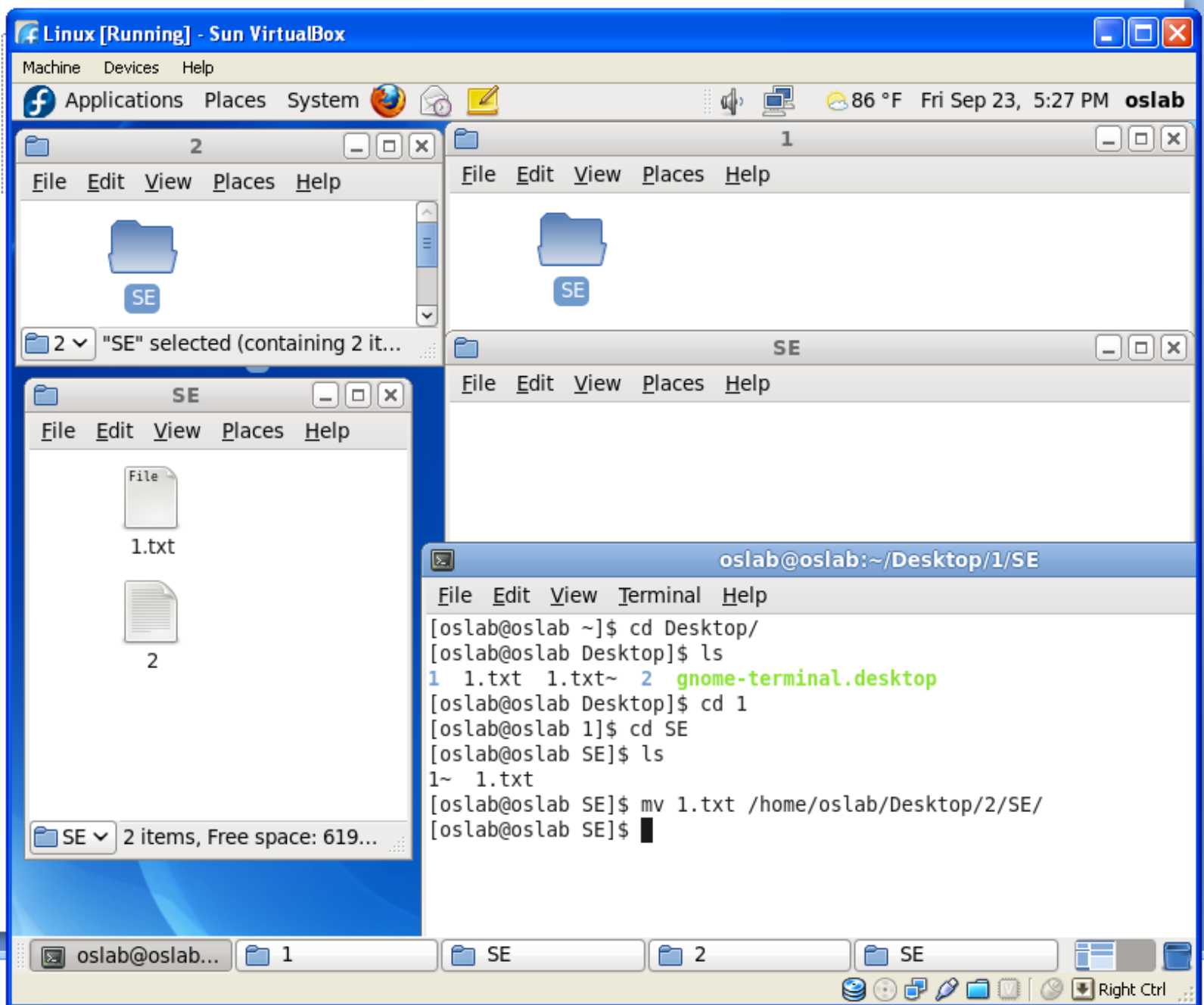
:
```

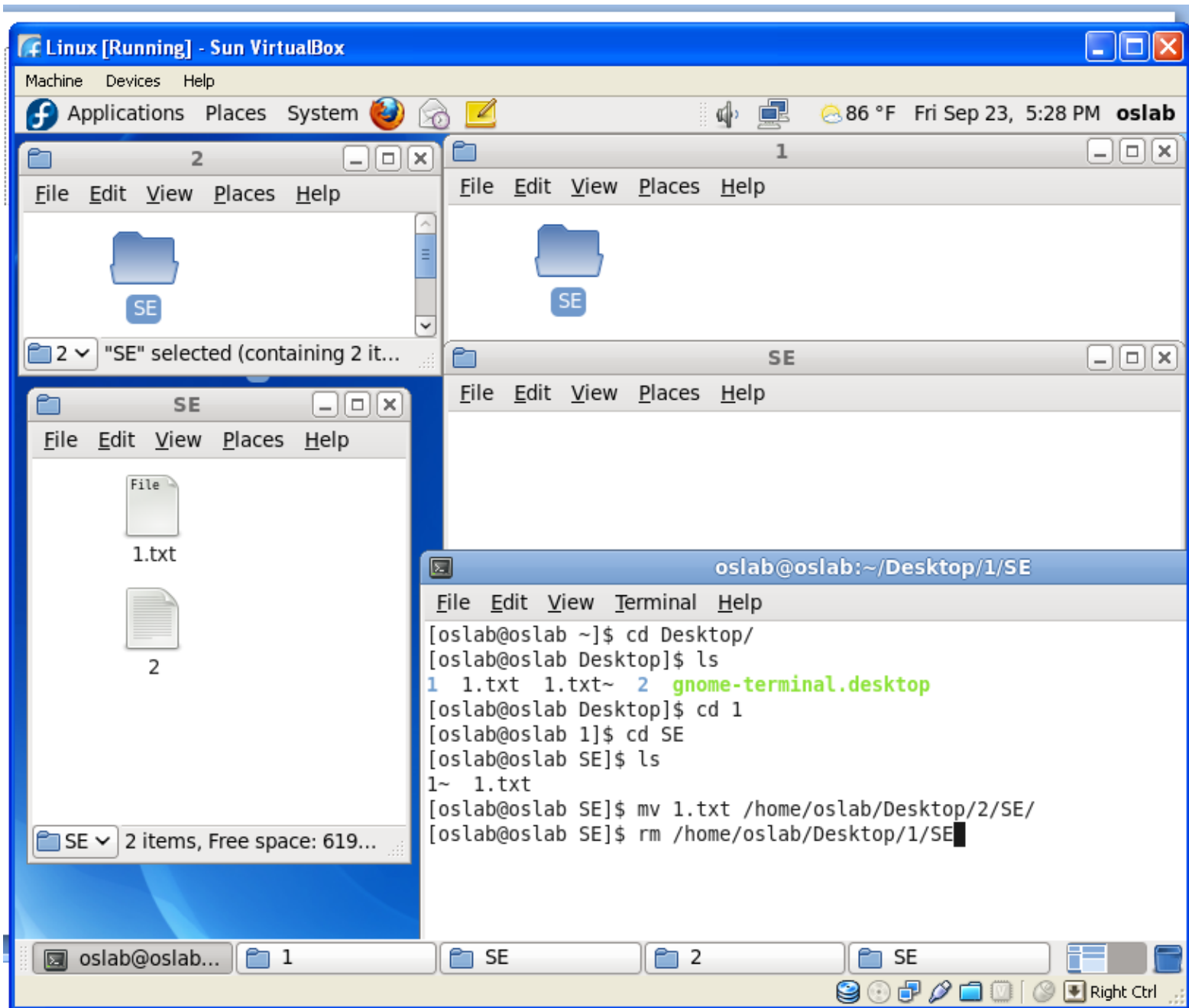


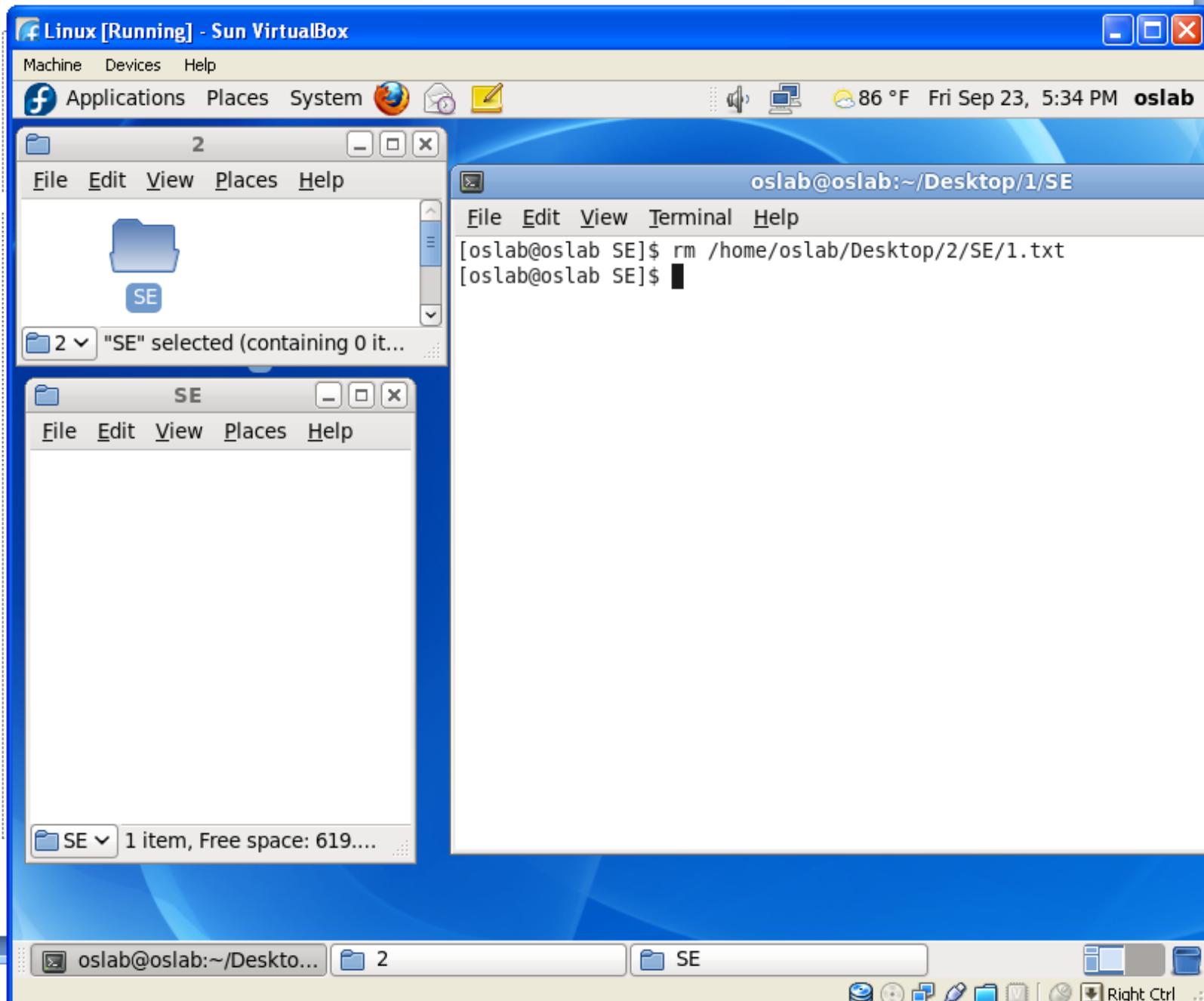






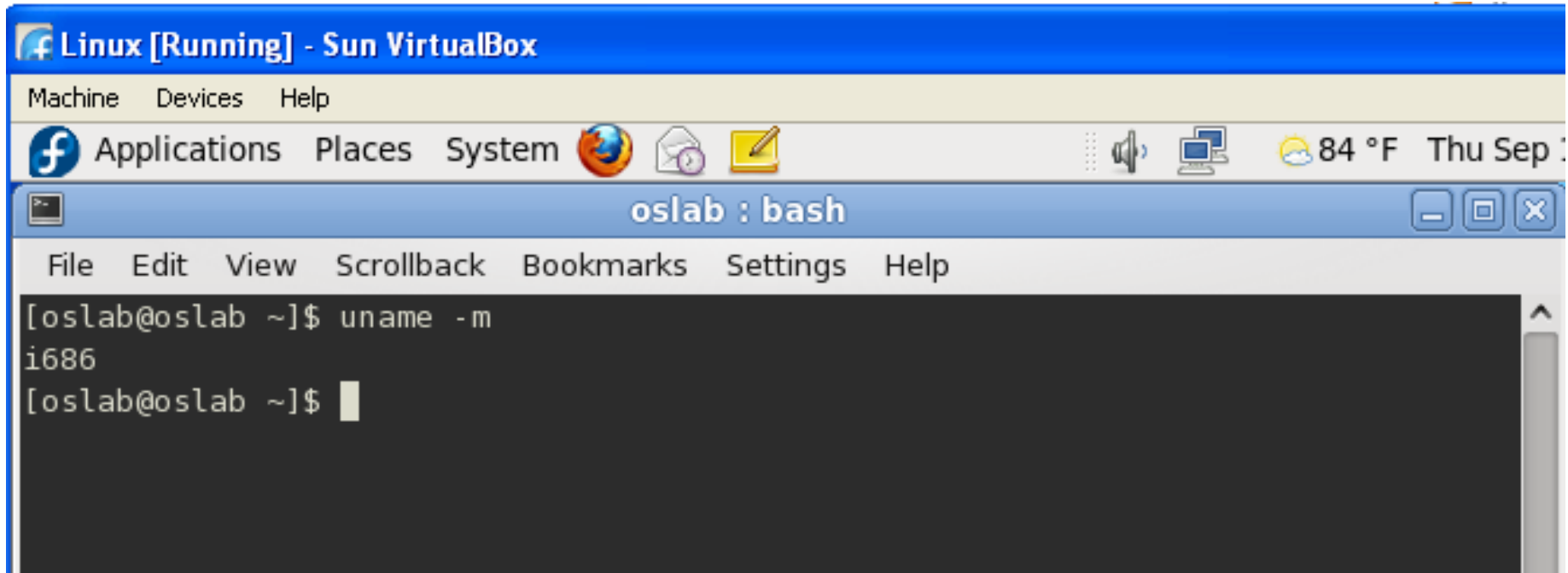






## uname -m

- x86\_64 when it is an kernel 64 bits
- i686 for 32 bits kernel



```
Linux [Running] - Sun VirtualBox
Machine  Devices  Help
Applications  Places  System
oslab : bash
File  Edit  View  Scrollback  Bookmarks  Settings  Help
[oslab@oslab ~]$ uname -m
i686
[oslab@oslab ~]$
```

# QUIZ - 1

# Lab 3 Tasks

- Clear
- Rename folder
- Rename file
- Delete folder having files in it
- Free
- History
- And more task .....